



UBUSI BIN ASSEMBLY INSTRUCTIONS

STEP
1



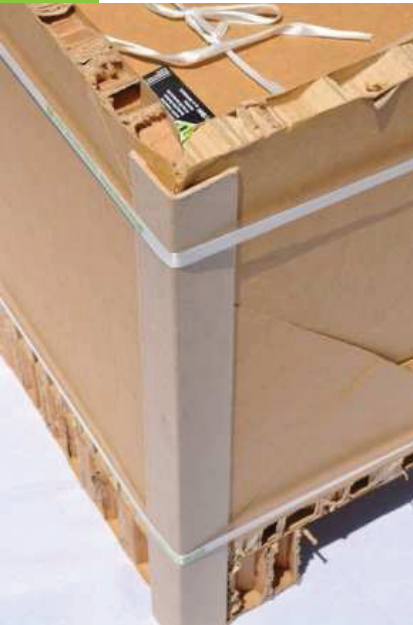
OPEN UBUSI BIN

STEP
2



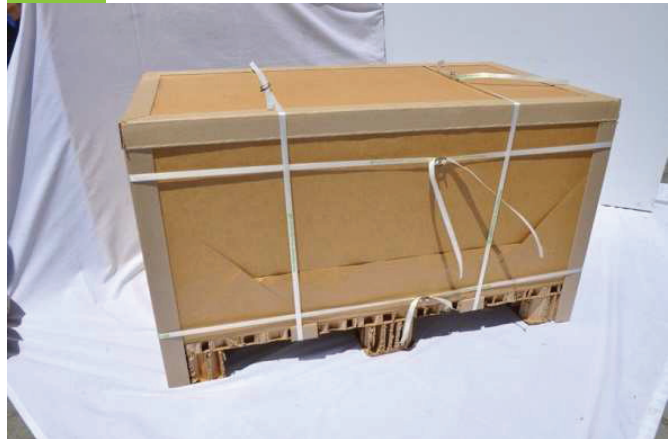
SLIDE IN SIDE WALLS

STEP
3



PUT CORNERBOARDS ON EVERY CORNER AND STRAP HORIZONTALLY. FILL BIN

STEP
4



PUT LID AND STRAP. READY FOR SHIPPING

PRODUCED BY:

t: +27 (0)21 905 9451
e: sales@ubusi.co.za
www.ubusi.co.za



9A Cabernet Road, Saxenburg Park, Blackheath, Cape Town, South Africa. reg. no.: 2013/184094/07

ENSURE PRODUCT SUITABLE FOR INTENDED USE. STORE IN A DRY PLACE. VG IDEAS PTY LTD.